

# Camelback Crossing Shops, Pads, & Mini-Majors Available



## NEC Dysart Rd & Camelback Rd Litchfield Park, Arizona

Population:	1 Mile	3 Mile	5 Mile
2010 Estimate	9,813	62,657	143,207
2015 Projection	11,660	74,139	168,744

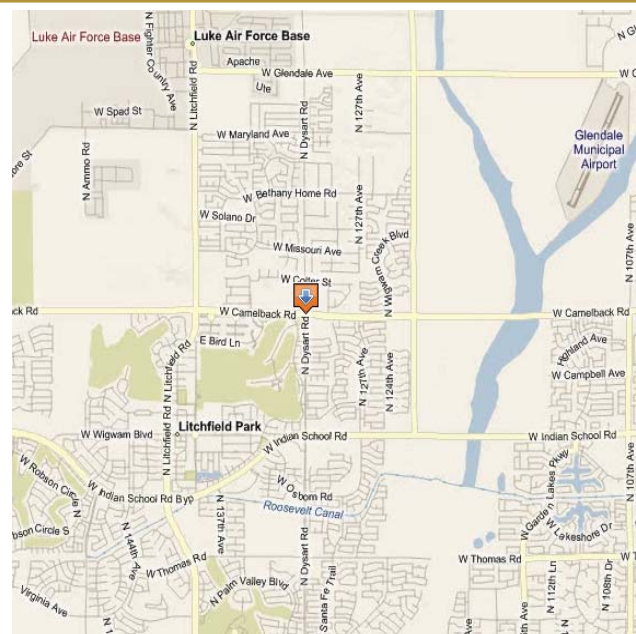
Median HH Income:	1 Mile	3 Mile	5 Mile
2010 Estimate	\$58,193	\$72,395	\$68,284

**Available:**

- Suite 101 - 1,089 SF
- Suite 200 - 1,550 SF
- Suite 204 - 1,220 SF
- Suite 214 - 1,057 SF
- Suite 220 - 1,679 SF (restaurant build-out)
- 1-2 Acre Pad & Mini-Major

**Zoning :** CS, RD, Maricopa County

**Come Join:**



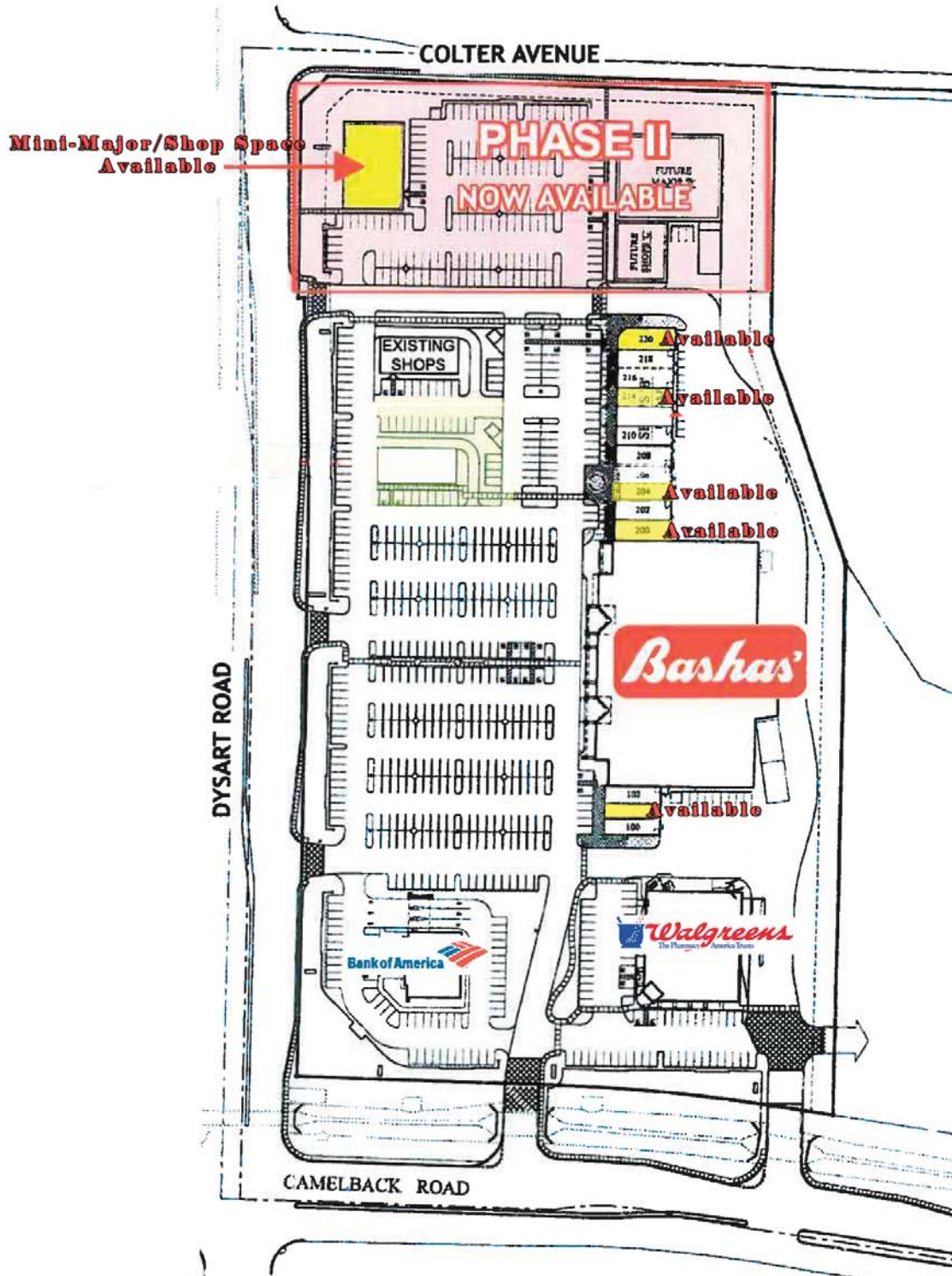
Tyson Switzenberg  
tswitzenberg@srcre.com  
480-941-0317

John Reva  
jreva@srcre.com  
480-941-0302

Trask Switzenberg  
trasks@srcre.com  
480-941-7213

# NEC Dysart Rd & Camelback Rd

SITE PLAN (NOT DRAWN TO SCALE)

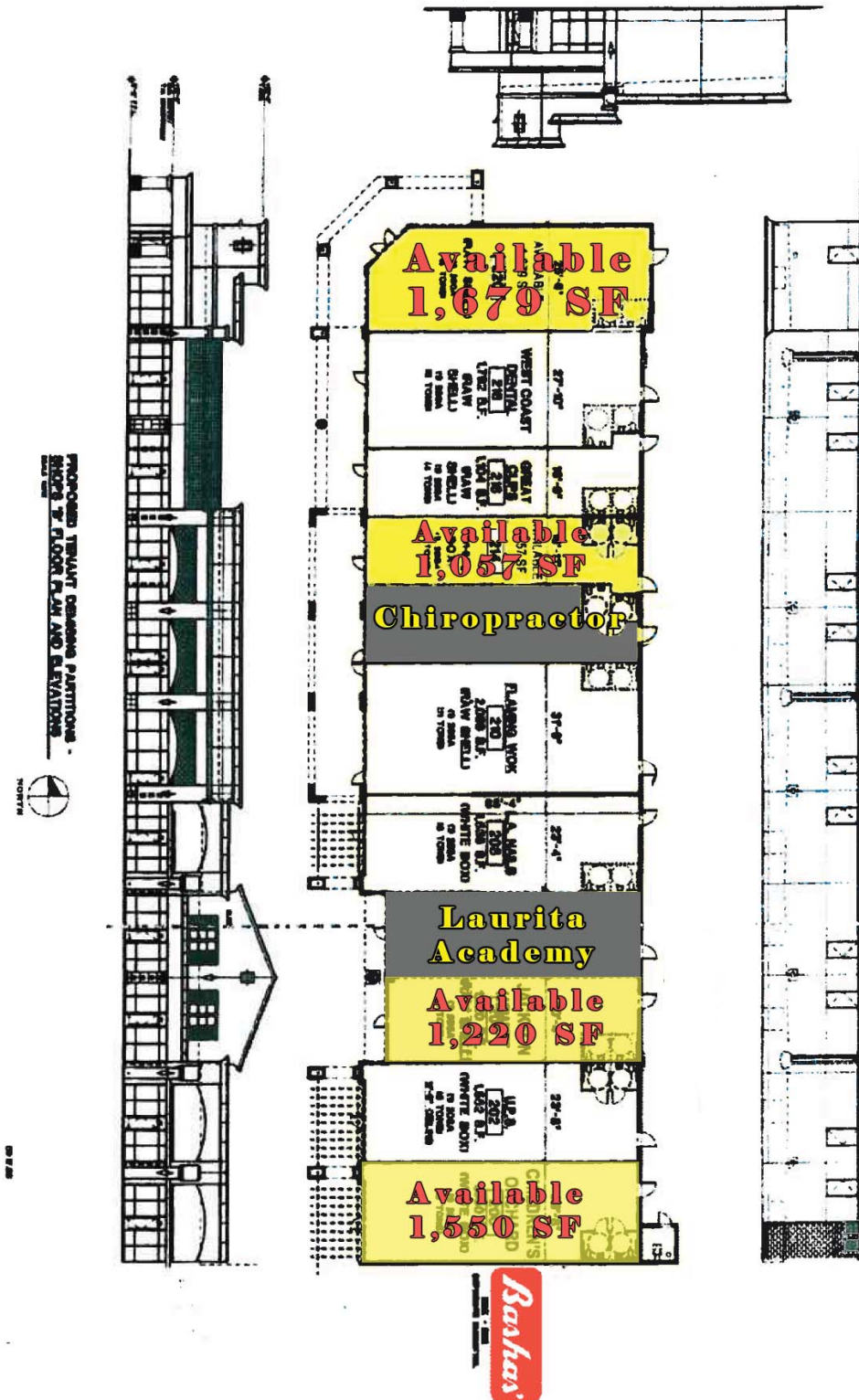


Tyson Switzenberg  
tswitzenberg@srcre.com  
480-941-0317

John Reva  
jreva@srcre.com  
480-941-0302

Trask Switzenberg  
trasks@srcre.com  
480-941-7213

# NEC Dysart Rd & Camelback Rd

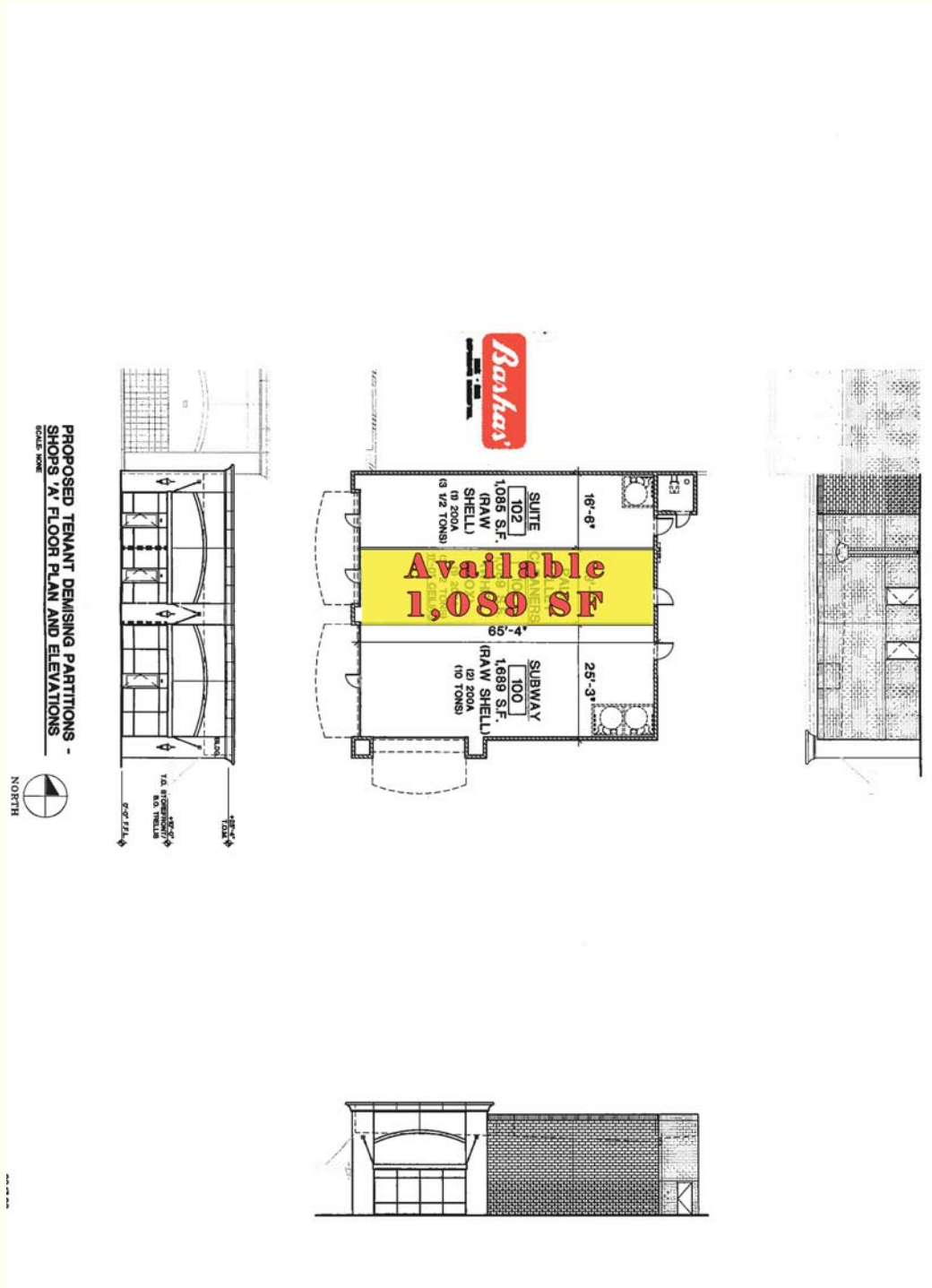


Tyson Switzenberg  
 tswitzenberg@srcre.com  
 480-941-0317

John Reva  
 jreva@srcre.com  
 480-941-0302

Trask Switzenberg  
 trasks@srcre.com  
 480-941-7213

# NEC Dysart Rd & Camelback Rd



6920 E. 1st Street - Suite #100 - Scottsdale, AZ 85251

Tyson Switzenberg  
 tswitzenberg@srcre.com  
 480-941-0317

John Reva  
 jreva@srcre.com  
 480-941-0302

Trask Switzenberg  
 trasks@srcre.com  
 480-941-7213

www.srcommercialrealstate.com



## Market Profile

Dysart Rd. & Camelback Rd.

	Radius: 1 Mile	Radius: 3 Mile	Radius: 5 Mile
2000 Total Population	1,641	30,098	65,626
2000 Group Quarters	16	617	1,028
2010 Total Population	9,813	62,657	143,207
2015 Total Population	11,660	74,139	168,744
2010 - 2015 Annual Rate	3.51%	3.42%	3.34%
2000 Households	644	10,160	22,308
2000 Average Household Size	2.52	2.90	2.90
2010 Households	4,055	21,700	48,631
2010 Average Household Size	2.42	2.86	2.92
2015 Households	4,854	25,732	57,344
2015 Average Household Size	2.40	2.86	2.92
2010 - 2015 Annual Rate	3.66%	3.47%	3.35%
2000 Families	531	8,309	17,653
2000 Average Family Size	2.78	3.19	3.23
2010 Families	2,689	16,450	36,455
2010 Average Family Size	2.99	3.27	3.34
2015 Families	3,123	19,101	42,253
2015 Average Family Size	3.02	3.30	3.37
2010 - 2015 Annual Rate	3.04%	3.03%	3.00%
<b>2000 Housing Units</b>	<b>705</b>	<b>10,708</b>	<b>23,891</b>
Owner Occupied Housing Units	75.9%	71.8%	72.2%
Renter Occupied Housing Units	4.1%	21.3%	20.4%
Vacant Housing Units	20.0%	6.9%	7.4%
<b>2010 Housing Units</b>	<b>4,591</b>	<b>23,888</b>	<b>53,911</b>
Owner Occupied Housing Units	71.1%	73.3%	70.3%
Renter Occupied Housing Units	17.3%	17.6%	19.9%
Vacant Housing Units	11.7%	9.2%	9.8%
<b>2015 Housing Units</b>	<b>5,569</b>	<b>28,606</b>	<b>64,259</b>
Owner Occupied Housing Units	69.3%	72.6%	69.6%
Renter Occupied Housing Units	17.9%	17.3%	19.6%
Vacant Housing Units	12.8%	10.0%	10.8%
<b>Median Household Income</b>			
2000	\$76,874	\$58,748	\$53,510
2010	\$58,193	\$72,395	\$69,284
2015	\$65,751	\$81,877	\$78,380
<b>Median Home Value</b>			
2000	\$215,812	\$143,958	\$123,681
2010	\$166,260	\$160,034	\$141,934
2015	\$172,308	\$167,129	\$150,238
<b>Per Capita Income</b>			
2000	\$38,916	\$24,146	\$22,040
2010	\$27,983	\$29,908	\$28,176
2015	\$31,638	\$33,546	\$31,712
<b>Median Age</b>			
2000	46.2	31.3	31.6
2010	34.2	32.7	33.7
2015	34.6	33.1	34.0

**Data Note:** Household population includes persons not residing in group quarters. Average Household Size is the household population divided by total households. Persons in families include the householder and persons related to the householder by birth, marriage, or adoption. Per Capita Income represents the income received by all persons aged 15 years and over divided by total population. Detail may not sum to totals due to rounding.

Source: ESRI forecasts for 2010 and 2015; U.S. Bureau of the Census, 2000 Census of Population and Housing



# Market Profile

Dysart Rd. & Camelback Rd.

	Radius: 1 Mile	Radius: 3 Mile	Radius: 5 Mile
<b>2000 Households by Income</b>			
Household Income Base	645	10,184	22,261
< \$15,000	5.1%	4.8%	6.6%
\$15,000 - \$24,999	5.6%	6.5%	7.7%
\$25,000 - \$34,999	8.2%	10.9%	12.2%
\$35,000 - \$49,999	11.5%	17.1%	18.6%
\$50,000 - \$74,999	17.8%	26.8%	27.1%
\$75,000 - \$99,999	17.4%	16.3%	14.6%
\$100,000 - \$149,999	18.4%	12.1%	9.3%
\$150,000 - \$199,999	6.4%	2.5%	2.0%
\$200,000 +	9.6%	2.9%	2.0%
Average Household Income	\$101,872	\$70,716	\$63,825
<b>2010 Households by Income</b>			
Household Income Base	4,054	21,700	48,627
< \$15,000	6.1%	4.2%	4.9%
\$15,000 - \$24,999	7.3%	4.3%	4.9%
\$25,000 - \$34,999	13.2%	7.5%	6.9%
\$35,000 - \$49,999	15.4%	12.7%	13.1%
\$50,000 - \$74,999	22.5%	23.3%	25.2%
\$75,000 - \$99,999	15.4%	17.2%	18.1%
\$100,000 - \$149,999	13.5%	22.9%	19.7%
\$150,000 - \$199,999	2.6%	3.8%	3.5%
\$200,000 +	3.9%	4.1%	3.6%
Average Household Income	\$75,426	\$87,476	\$83,245
<b>2015 Households by Income</b>			
Household Income Base	4,856	25,730	57,338
< \$15,000	4.4%	3.0%	3.6%
\$15,000 - \$24,999	5.7%	3.2%	3.6%
\$25,000 - \$34,999	10.5%	5.7%	5.3%
\$35,000 - \$49,999	11.9%	8.6%	8.9%
\$50,000 - \$74,999	24.6%	23.6%	25.3%
\$75,000 - \$99,999	16.5%	17.2%	18.4%
\$100,000 - \$149,999	17.7%	28.3%	25.2%
\$150,000 - \$199,999	3.8%	5.2%	5.0%
\$200,000 +	4.8%	5.3%	4.7%
Average Household Income	\$85,234	\$98,068	\$93,764
<b>2000 Owner Occupied Housing Units by Value</b>			
Total	610	7,846	17,331
< \$50,000	9.3%	4.0%	4.7%
\$50,000 - \$99,999	3.9%	12.5%	25.2%
\$100,000 - \$149,999	8.4%	38.6%	38.8%
\$150,000 - \$199,999	22.3%	25.6%	18.4%
\$200,000 - \$299,999	33.0%	14.3%	9.7%
\$300,000 - \$499,999	20.7%	4.7%	2.9%
\$500,000 - \$999,999	2.5%	0.3%	0.2%
\$1,000,000+	0.0%	0.0%	0.1%
Average Home Value	\$231,650	\$158,432	\$138,113
<b>2000 Specified Renter Occ. Housing Units by Contract Rent</b>			
Total	30	2,306	4,937
With Cash Rent	83.3%	83.5%	89.9%
No Cash Rent	16.7%	16.5%	10.1%
Median Rent	\$875	\$660	\$624
Average Rent	\$769	\$697	\$652

**Data Note:** Income represents the preceding year, expressed in current dollars. Household income includes wage and salary earnings, interest, dividends, net rents, pensions, SSI and welfare payments, child support and alimony. Specified Renter Occupied Housing Units exclude houses on 10+ acres. Average Rent excludes units paying no cash rent.

Source: ESRI forecasts for 2010 and 2015; U.S. Bureau of the Census, 2000 Census of Population and Housing



# Market Profile

Dysart Rd. & Camelback Rd.

	Radius: 1 Mile	Radius: 3 Mile	Radius: 5 Mile
<b>2000 Population by Age</b>			
Total	1,642	30,094	65,624
Age 0 - 4	4.6%	8.9%	8.8%
Age 5 - 9	6.7%	8.7%	8.6%
Age 10 - 14	7.5%	8.4%	8.2%
Age 15 - 19	6.2%	7.1%	6.9%
Age 20 - 24	2.8%	7.2%	6.8%
Age 25 - 34	5.9%	16.0%	16.5%
Age 35 - 44	14.4%	17.3%	16.3%
Age 45 - 54	16.1%	12.1%	11.8%
Age 55 - 64	14.6%	7.4%	7.8%
Age 65 - 74	13.5%	4.5%	4.9%
Age 75 - 84	6.5%	2.0%	2.6%
Age 85+	1.2%	0.4%	0.8%
Age 18+	76.9%	69.6%	70.1%
<b>2010 Population by Age</b>			
Total	9,812	62,659	143,207
Age 0 - 4	8.3%	9.0%	8.8%
Age 5 - 9	7.4%	8.0%	8.0%
Age 10 - 14	6.5%	7.3%	7.3%
Age 15 - 19	6.4%	6.7%	6.6%
Age 20 - 24	7.1%	7.0%	6.3%
Age 25 - 34	15.5%	15.5%	15.0%
Age 35 - 44	13.6%	14.6%	14.4%
Age 45 - 54	13.7%	13.4%	12.8%
Age 55 - 64	10.8%	9.7%	10.0%
Age 65 - 74	6.4%	5.5%	6.4%
Age 75 - 84	3.2%	2.5%	3.3%
Age 85+	1.0%	0.7%	1.1%
Age 18+	73.9%	71.7%	72.0%
<b>2015 Population by Age</b>			
Total	11,661	74,139	168,741
Age 0 - 4	8.2%	8.8%	8.7%
Age 5 - 9	7.4%	8.0%	8.1%
Age 10 - 14	6.6%	7.3%	7.4%
Age 15 - 19	5.7%	6.3%	6.3%
Age 20 - 24	6.8%	6.8%	6.2%
Age 25 - 34	15.7%	15.8%	14.8%
Age 35 - 44	13.1%	14.0%	14.0%
Age 45 - 54	12.3%	12.4%	11.9%
Age 55 - 64	11.6%	10.2%	10.2%
Age 65 - 74	8.1%	6.9%	7.7%
Age 75 - 84	3.3%	2.8%	3.5%
Age 85+	1.0%	0.8%	1.2%
Age 18+	74.3%	72.0%	72.0%
<b>2000 Population by Sex</b>			
Males	48.9%	50.9%	50.2%
Females	51.1%	49.1%	49.8%
<b>2010 Population by Sex</b>			
Males	50.1%	50.1%	49.6%
Females	49.9%	49.9%	50.4%
<b>2015 Population by Sex</b>			
Males	50.0%	50.0%	49.5%
Females	50.0%	50.0%	50.5%

Source: ESRI forecasts for 2010 and 2015.; U.S. Bureau of the Census, 2000 Census of Population and Housing



Dysart Rd. & Camelback Rd.

	Radius: 1 Mile	Radius: 3 Mile	Radius: 5 Mile
<b>2000 Population by Race/Ethnicity</b>			
Total	1,640	30,097	65,626
White Alone	91.9%	78.0%	75.4%
Black Alone	1.1%	5.9%	5.4%
American Indian Alone	0.4%	0.7%	0.8%
Asian or Pacific Islander Alone	1.6%	3.4%	2.6%
Some Other Race Alone	3.1%	8.5%	12.3%
Two or More Races	2.0%	3.6%	3.5%
Hispanic Origin	9.8%	18.8%	24.5%
Diversity Index	30.6	57.4	63.9
<b>2010 Population by Race/Ethnicity</b>			
Total	9,813	62,657	143,207
White Alone	72.9%	70.0%	66.4%
Black Alone	4.0%	7.1%	6.4%
American Indian Alone	1.3%	1.0%	1.0%
Asian or Pacific Islander Alone	3.3%	4.0%	4.2%
Some Other Race Alone	14.7%	13.6%	17.6%
Two or More Races	3.7%	4.3%	4.4%
Hispanic Origin	32.6%	30.1%	36.0%
Diversity Index	70.0	71.3	75.9
<b>2015 Population by Race/Ethnicity</b>			
Total	11,660	74,139	168,745
White Alone	69.6%	66.6%	63.4%
Black Alone	4.6%	7.9%	7.1%
American Indian Alone	1.3%	1.0%	1.1%
Asian or Pacific Islander Alone	3.7%	4.5%	4.4%
Some Other Race Alone	16.7%	15.4%	19.3%
Two or More Races	4.1%	4.6%	4.7%
Hispanic Origin	37.4%	34.4%	40.0%
Diversity Index	74.1	75.2	78.7
<b>2000 Population 3+ by School Enrollment</b>			
Total	1,566	28,467	62,045
Enrolled in Nursery/Preschool	1.0%	1.4%	1.5%
Enrolled in Kindergarten	1.1%	2.2%	2.0%
Enrolled in Grade 1-8	11.8%	14.1%	13.9%
Enrolled in Grade 9-12	5.8%	6.5%	5.9%
Enrolled in College	4.2%	6.1%	5.8%
Enrolled in Grad/Prof School	0.3%	1.4%	1.2%
Not Enrolled in School	75.7%	68.3%	69.7%
<b>2010 Population 25+ by Educational Attainment</b>			
Total	6,301	38,847	90,237
Less than 9th Grade	7.6%	4.9%	6.5%
9th - 12th Grade, No Diploma	6.0%	4.4%	5.7%
High School Graduate	24.6%	23.5%	26.2%
Some College, No Degree	24.4%	26.8%	25.3%
Associate Degree	9.9%	10.0%	9.5%
Bachelor's Degree	16.9%	19.4%	17.0%
Graduate/Professional Degree	10.5%	11.0%	9.9%

**Data Note:** Persons of Hispanic Origin may be of any race. The Diversity Index measures the probability that two people from the same area will be from different race/ethnic groups.

Source: [ESRI forecasts for 2010 and 2015; U.S. Bureau of the Census, 2000 Census of Population and Housing](#)



Dysart Rd. & Camelback Rd.

	Radius: 1 Mile	Radius: 3 Mile	Radius: 5 Mile
<b>2010 Population 15+ by Marital Status</b>			
Total	7,628	47,483	108,822
Never Married	32.0%	27.8%	27.3%
Married	53.6%	60.2%	58.8%
Widowed	4.2%	3.0%	3.7%
Divorced	10.2%	9.1%	10.3%
<b>2000 Population 16+ by Employment Status</b>			
Total	1,289	21,897	47,822
In Labor Force	52.5%	71.0%	69.8%
Civilian Employed	50.9%	59.9%	61.9%
Civilian Unemployed	0.6%	2.0%	2.7%
In Armed Forces	1.0%	9.0%	5.1%
Not in Labor Force	47.5%	29.0%	30.2%
<b>2010 Civilian Population 16+ in Labor Force</b>			
Civilian Employed	91.8%	92.7%	91.9%
Civilian Unemployed	8.2%	7.3%	8.1%
<b>2015 Civilian Population 16+ in Labor Force</b>			
Civilian Employed	93.2%	94.1%	93.4%
Civilian Unemployed	6.8%	5.9%	6.6%
<b>2000 Females 16+ by Employment Status and Age of Children</b>			
Total	659	10,821	24,120
Own Children < 6 Only	4.4%	10.8%	10.6%
Employed/in Armed Forces	1.8%	5.7%	6.0%
Unemployed	0.0%	0.3%	0.3%
Not in Labor Force	2.6%	4.8%	4.3%
Own Children <6 and 6-17	6.2%	8.0%	8.5%
Employed/in Armed Forces	1.7%	4.5%	4.8%
Unemployed	0.0%	0.1%	0.2%
Not in Labor Force	4.6%	3.4%	3.5%
Own Children 6-17 Only	14.7%	21.4%	19.1%
Employed/in Armed Forces	10.6%	14.7%	13.7%
Unemployed	0.2%	0.3%	0.5%
Not in Labor Force	3.9%	6.4%	5.0%
No Own Children <18	74.7%	59.8%	61.8%
Employed/in Armed Forces	26.6%	34.1%	33.5%
Unemployed	0.2%	1.0%	1.9%
Not in Labor Force	48.0%	24.7%	26.4%



# Market Profile

Dysart Rd. & Camelback Rd.

	Radius: 1 Mile	Radius: 3 Mile	Radius: 5 Mile
<b>2010 Employed Population 16+ by Industry</b>			
Total	4,100	26,440	59,618
Agriculture/Mining	0.9%	0.8%	0.8%
Construction	10.1%	7.9%	8.3%
Manufacturing	4.5%	6.2%	6.4%
Wholesale Trade	2.9%	3.3%	3.2%
Retail Trade	11.5%	11.0%	11.8%
Transportation/Utilities	5.4%	7.0%	6.5%
Information	1.6%	1.9%	1.9%
Finance/Insurance/Real Estate	9.9%	10.0%	10.0%
Services	47.3%	44.4%	44.2%
Public Administration	5.9%	7.5%	7.0%
<b>2010 Employed Population 16+ by Occupation</b>			
Total	4,099	26,441	59,619
White Collar	62.2%	66.4%	64.3%
Management/Business/Financial	14.9%	17.0%	15.5%
Professional	21.5%	21.9%	20.9%
Sales	13.5%	12.7%	12.7%
Administrative Support	12.3%	14.8%	15.2%
Services	20.1%	17.0%	17.8%
Blue Collar	17.7%	16.6%	17.9%
Farming/Forestry/Fishing	0.3%	0.2%	0.3%
Construction/Extraction	6.6%	5.0%	5.5%
Installation/Maintenance/Repair	3.6%	3.8%	3.7%
Production	2.4%	3.1%	3.5%
Transportation/Material Moving	4.7%	4.4%	5.0%
<b>2000 Workers 16+ by Means of Transportation to Work</b>			
Total	663	14,825	31,555
Drove Alone - Car, Truck, or Van	77.8%	75.2%	76.0%
Carpooled - Car, Truck, or Van	14.0%	17.1%	17.1%
Public Transportation	0.0%	0.4%	0.4%
Walked	0.0%	1.8%	1.9%
Other Means	3.3%	2.4%	2.1%
Worked at Home	4.8%	3.1%	2.5%
<b>2000 Workers 16+ by Travel Time to Work</b>			
Total	664	14,825	31,556
Did not Work at Home	95.2%	96.9%	97.5%
Less than 5 minutes	2.9%	2.3%	2.3%
5 to 9 minutes	11.7%	13.5%	10.2%
10 to 19 minutes	22.0%	24.0%	23.9%
20 to 24 minutes	9.8%	9.7%	12.1%
25 to 34 minutes	21.4%	23.4%	23.7%
35 to 44 minutes	6.3%	8.9%	9.3%
45 to 59 minutes	15.7%	10.9%	11.2%
60 to 89 minutes	4.2%	2.9%	3.6%
90 or more minutes	1.2%	1.4%	1.3%
Worked at Home	4.8%	3.1%	2.5%
Average Travel Time to Work (in min)	26.1	25.1	26.3
<b>2000 Households by Vehicles Available</b>			
Total	641	10,157	22,271
None	0.8%	2.2%	3.4%
1	22.6%	28.9%	31.4%
2	51.6%	52.3%	49.2%
3	19.0%	13.6%	12.6%
4	4.8%	2.3%	2.5%
5+	1.1%	0.7%	0.9%
Average Number of Vehicles Available	2.1	1.9	1.8

Source: ESRI forecasts for 2010; U.S. Bureau of the Census, 2000 Census of Population and Housing



Dysart Rd. & Camelback Rd.

Radius: 1 Mile

Radius: 3 Mile

Radius: 5 Mile

**2000 Households by Type**

	Radius: 1 Mile	Radius: 3 Mile	Radius: 5 Mile
<b>Total</b>	<b>643</b>	<b>10,160</b>	<b>22,306</b>
Family Households	82.6%	81.8%	79.1%
Married-couple Family	74.0%	70.3%	65.0%
With Related Children	24.1%	38.6%	34.2%
Other Family (No Spouse)	8.6%	11.5%	14.1%
With Related Children	5.1%	8.5%	10.2%
Nonfamily Households	17.4%	18.2%	20.9%
Householder Living Alone	14.8%	13.4%	15.6%
Householder Not Living Alone	2.6%	4.8%	5.3%
Households with Related Children	29.2%	47.0%	44.4%
Households with Persons 65+	37.4%	14.4%	16.6%

**2000 Households by Size**

	Radius: 1 Mile	Radius: 3 Mile	Radius: 5 Mile
<b>Total</b>	<b>644</b>	<b>10,160</b>	<b>22,308</b>
1 Person Household	14.6%	13.4%	15.6%
2 Person Household	49.7%	34.7%	34.9%
3 Person Household	12.3%	18.5%	17.8%
4 Person Household	13.2%	19.5%	17.9%
5 Person Household	6.2%	8.8%	8.4%
6 Person Household	3.0%	3.4%	3.4%
7+ Person Household	0.9%	1.7%	2.2%

**2000 Households by Year Householder Moved In**

	Radius: 1 Mile	Radius: 3 Mile	Radius: 5 Mile
<b>Total</b>	<b>640</b>	<b>10,157</b>	<b>22,269</b>
Moved in 1999 to March 2000	17.0%	35.6%	34.4%
Moved in 1995 to 1998	29.7%	42.4%	39.2%
Moved in 1990 to 1994	16.1%	10.7%	12.4%
Moved in 1980 to 1989	19.4%	7.6%	9.3%
Moved in 1970 to 1979	11.9%	2.6%	3.7%
Moved in 1969 or Earlier	5.9%	1.1%	1.1%
Median Year Householder Moved In	1994	1998	1997

**2000 Housing Units by Units in Structure**

	Radius: 1 Mile	Radius: 3 Mile	Radius: 5 Mile
<b>Total</b>	<b>797</b>	<b>10,890</b>	<b>24,078</b>
1, Detached	70.3%	75.6%	74.4%
1, Attached	6.9%	9.2%	7.2%
2	0.0%	0.2%	0.8%
3 or 4	0.0%	0.8%	2.6%
5 to 9	0.1%	2.6%	3.2%
10 to 19	0.4%	3.2%	2.4%
20+	0.0%	2.4%	4.5%
Mobile Home	15.7%	4.9%	4.3%
Other	6.6%	1.0%	0.6%

**2000 Housing Units by Year Structure Built**

	Radius: 1 Mile	Radius: 3 Mile	Radius: 5 Mile
<b>Total</b>	<b>702</b>	<b>10,692</b>	<b>23,888</b>
1999 to March 2000	6.1%	14.3%	15.1%
1995 to 1998	18.9%	36.3%	29.4%
1990 to 1994	11.3%	11.0%	10.5%
1980 to 1989	14.4%	15.7%	18.9%
1970 to 1979	28.2%	12.0%	14.7%
1969 or Earlier	21.1%	10.8%	11.3%
Median Year Structure Built	1980	1995	1992