

Desert Sky Station Shop Space Available



**NWC 79th Ave & Thomas Rd
Phoenix, Arizona**

Population:	<i>1 Mile</i>	<i>3 Mile</i>	<i>5 Mile</i>
2010 Estimate	20,801	165,604	374,482
2015 Projection	22,639	176,017	408,615

Median HH Income:	<i>1 Mile</i>	<i>3 Mile</i>	<i>5 Mile</i>
2010 Estimate	\$49,956	\$54,620	\$53,655

Available:	West end-cap	± 6,022 SF (can demise)
	Suite 112	± 1,531 SF
	Suite 114	± 1,531 SF
	East end-cap	± 3,000 SF (can demise)



Come Join:



6920 E. 1st Street - Suite #100 - Scottsdale, AZ 85251

Tyson Switzenberg
tswitzenberg@srcre.com
480-941-0317

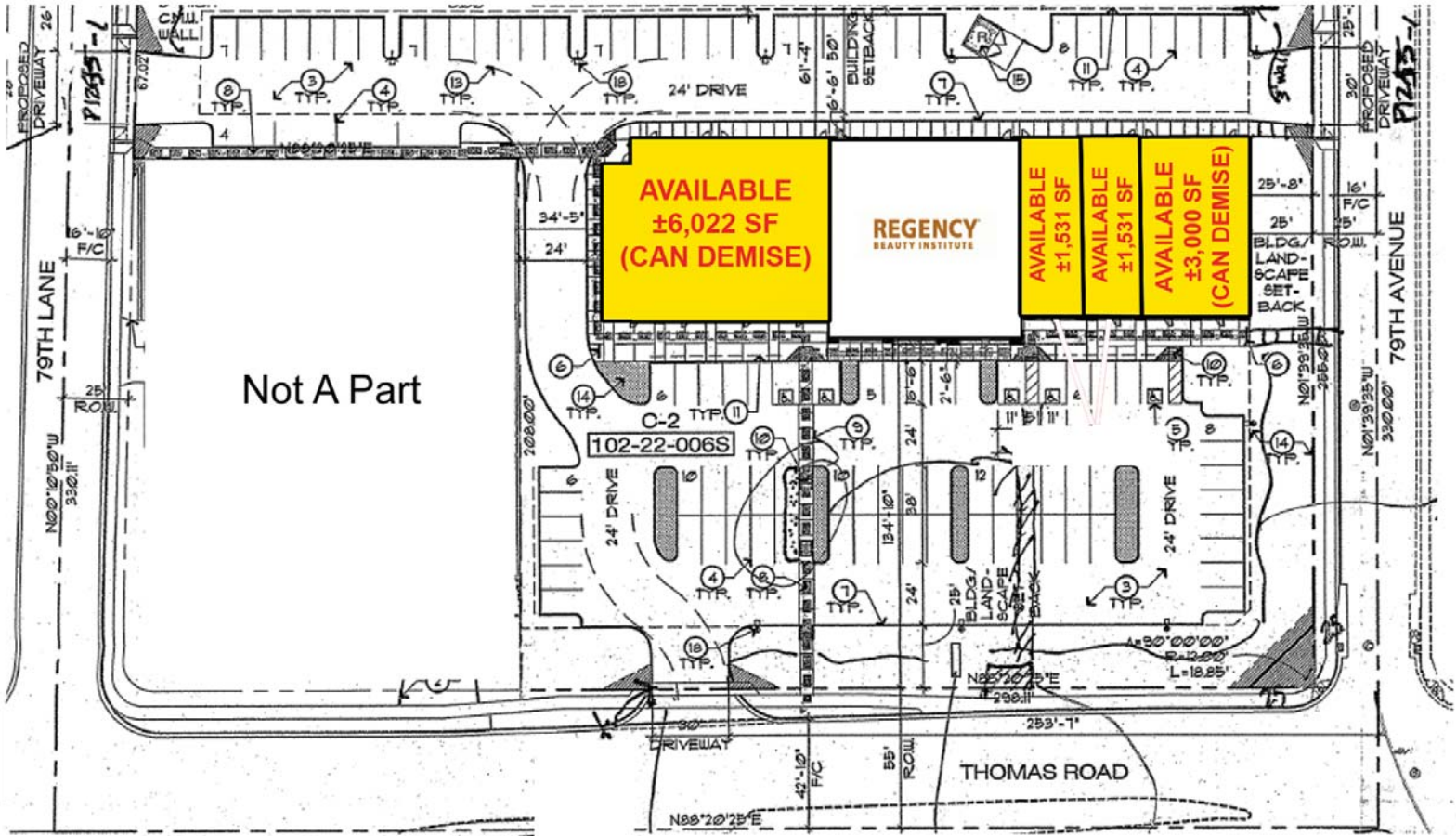
John Reva
jreva@srcre.com
480-941-0302

Trask Switzenberg
trasks@srcre.com
480-941-7213

www.srcommercialrealstate.com



NWC 79th Ave & Thomas Rd



Tyson Switzenberg
 tswitzenberg@srcre.com
 480-941-0317

John Reva
 jreva@srcre.com
 480-941-0302

Trask Switzenberg
 trasks@srcre.com
 480-941-7213



Market Profile

NWC 79th Ave. & Thomas Rd.

Ring: 1, 3, 5 Miles	Ring: 1 mile radius	Ring: 3 miles radius	Ring: 5 miles radius
2000 Total Population	16,226	135,609	274,554
2000 Group Quarters	3	81	558
2010 Total Population	20,801	165,604	374,482
2015 Total Population	22,639	176,017	408,615
2010 - 2015 Annual Rate	1.71%	1.23%	1.76%
2000 Households	4,375	37,631	79,264
2000 Average Household Size	3.71	3.60	3.46
2010 Households	5,640	45,165	106,126
2010 Average Household Size	3.69	3.66	3.52
2015 Households	6,156	47,920	115,648
2015 Average Household Size	3.68	3.67	3.53
2010 - 2015 Annual Rate	1.77%	1.19%	1.73%
2000 Families	3,657	31,034	62,357
2000 Average Family Size	3.94	3.87	3.82
2010 Families	4,419	35,772	80,177
2010 Average Family Size	4.03	4.01	3.96
2015 Families	4,720	37,376	86,036
2015 Average Family Size	4.06	4.04	3.99
2010 - 2015 Annual Rate	1.33%	0.88%	1.42%
2000 Housing Units	4,742	39,137	83,180
Owner Occupied Housing Units	70.0%	69.0%	62.4%
Renter Occupied Housing Units	24.0%	27.1%	32.9%
Vacant Housing Units	6.0%	4.0%	4.7%
2010 Housing Units	6,341	48,378	114,961
Owner Occupied Housing Units	56.4%	61.1%	58.2%
Renter Occupied Housing Units	32.6%	32.3%	34.1%
Vacant Housing Units	11.1%	6.6%	7.7%
2015 Housing Units	7,059	51,944	126,698
Owner Occupied Housing Units	53.0%	59.2%	57.2%
Renter Occupied Housing Units	34.2%	33.1%	34.1%
Vacant Housing Units	12.8%	7.7%	8.7%
Median Household Income			
2000	\$37,452	\$40,241	\$37,358
2010	\$49,956	\$54,620	\$53,655
2015	\$56,559	\$60,754	\$60,812
Median Home Value			
2000	\$79,319	\$82,586	\$83,254
2010	\$88,676	\$92,546	\$94,830
2015	\$93,718	\$98,071	\$102,030
Per Capita Income			
2000	\$11,868	\$12,626	\$12,734
2010	\$15,674	\$16,601	\$17,582
2015	\$17,854	\$18,657	\$20,034
Median Age			
2000	25.9	25.8	26.2
2010	26.8	27.0	27.6
2015	27.0	27.2	27.9

Data Note: Household population includes persons not residing in group quarters. Average Household Size is the household population divided by total households. Persons in families include the householder and persons related to the householder by birth, marriage, or adoption. Per Capita Income represents the income received by all persons aged 15 years and over divided by total population. Detail may not sum to totals due to rounding.

Source: ESRI forecasts for 2010 and 2015; U.S. Bureau of the Census, 2000 Census of Population and Housing



Market Profile

NWC 79th Ave. & Thomas Rd.

Ring: 1, 3, 5 Miles

Ring: 1 mile radius

Ring: 3 miles radius

Ring: 5 miles radius

2000 Households by Income

Household Income Base	4,427	37,789	79,291
< \$15,000	10.9%	11.1%	14.8%
\$15,000 - \$24,999	15.1%	15.1%	15.8%
\$25,000 - \$34,999	19.8%	16.3%	15.9%
\$35,000 - \$49,999	23.2%	21.4%	19.9%
\$50,000 - \$74,999	19.4%	23.6%	21.0%
\$75,000 - \$99,999	7.4%	8.0%	7.6%
\$100,000 - \$149,999	3.7%	3.9%	4.0%
\$150,000 - \$199,999	0.2%	0.3%	0.5%
\$200,000 +	0.4%	0.4%	0.4%
Average Household Income	\$42,913	\$44,968	\$43,422

2010 Households by Income

Household Income Base	5,642	45,167	106,124
< \$15,000	7.0%	7.1%	8.9%
\$15,000 - \$24,999	10.5%	8.8%	9.5%
\$25,000 - \$34,999	10.5%	10.8%	10.6%
\$35,000 - \$49,999	22.0%	17.6%	16.6%
\$50,000 - \$74,999	26.8%	28.0%	25.8%
\$75,000 - \$99,999	12.4%	15.4%	14.3%
\$100,000 - \$149,999	9.4%	10.2%	11.1%
\$150,000 - \$199,999	0.8%	1.3%	1.8%
\$200,000 +	0.5%	0.8%	1.3%
Average Household Income	\$56,919	\$60,867	\$61,931

2015 Households by Income

Household Income Base	6,156	47,918	115,645
< \$15,000	5.3%	5.3%	6.6%
\$15,000 - \$24,999	8.5%	7.0%	7.5%
\$25,000 - \$34,999	8.5%	8.7%	8.7%
\$35,000 - \$49,999	16.2%	13.5%	12.2%
\$50,000 - \$74,999	31.1%	30.9%	28.9%
\$75,000 - \$99,999	14.2%	16.9%	15.8%
\$100,000 - \$149,999	14.1%	14.6%	15.6%
\$150,000 - \$199,999	1.4%	2.1%	2.8%
\$200,000 +	0.7%	1.1%	1.8%
Average Household Income	\$64,554	\$68,547	\$70,673

2000 Owner Occupied Housing Units by Value

Total	3,267	27,018	51,935
< \$50,000	6.0%	8.3%	11.9%
\$50,000 - \$99,999	85.5%	72.9%	62.7%
\$100,000 - \$149,999	6.8%	16.5%	19.6%
\$150,000 - \$199,999	0.9%	1.5%	4.0%
\$200,000 - \$299,999	0.3%	0.5%	1.2%
\$300,000 - \$499,999	0.6%	0.3%	0.3%
\$500,000 - \$999,999	0.0%	0.0%	0.0%
\$1,000,000+	0.0%	0.0%	0.1%
Average Home Value	\$80,776	\$84,803	\$88,181

2000 Specified Renter Occ. Housing Units by Contract Rent

Total	1,053	10,589	27,244
With Cash Rent	96.0%	97.6%	97.5%
No Cash Rent	4.0%	2.4%	2.5%
Median Rent	\$580	\$535	\$502
Average Rent	\$564	\$533	\$500

Data Note: Income represents the preceding year, expressed in current dollars. Household income includes wage and salary earnings, interest, dividends, net rents, pensions, SSI and welfare payments, child support and alimony. Specified Renter Occupied Housing Units exclude houses on 10+ acres. Average Rent excludes units paying no cash rent.

Source: ESRI forecasts for 2010 and 2015; U.S. Bureau of the Census, 2000 Census of Population and Housing



Market Profile

NWC 79th Ave. & Thomas Rd.

Ring: 1, 3, 5 Miles	Ring: 1 mile radius	Ring: 3 miles radius	Ring: 5 miles radius
2000 Population by Age			
Total	16,227	135,606	274,553
Age 0 - 4	11.0%	11.1%	11.0%
Age 5 - 9	11.0%	11.0%	10.6%
Age 10 - 14	9.8%	9.7%	9.3%
Age 15 - 19	8.5%	8.4%	8.4%
Age 20 - 24	8.2%	8.4%	8.5%
Age 25 - 34	16.4%	17.4%	17.3%
Age 35 - 44	14.1%	14.1%	14.3%
Age 45 - 54	9.9%	9.7%	9.7%
Age 55 - 64	6.0%	5.6%	5.6%
Age 65 - 74	3.3%	2.9%	3.3%
Age 75 - 84	1.4%	1.3%	1.7%
Age 85+	0.2%	0.3%	0.4%
Age 18+	62.8%	63.0%	64.1%
2010 Population by Age			
Total	20,802	165,606	374,481
Age 0 - 4	10.9%	11.2%	10.9%
Age 5 - 9	10.3%	10.0%	9.8%
Age 10 - 14	9.1%	8.7%	8.4%
Age 15 - 19	8.5%	8.5%	8.2%
Age 20 - 24	8.1%	8.2%	8.2%
Age 25 - 34	16.4%	16.7%	16.8%
Age 35 - 44	12.7%	13.4%	13.3%
Age 45 - 54	10.3%	10.6%	10.8%
Age 55 - 64	7.8%	7.2%	7.4%
Age 65 - 74	3.9%	3.5%	3.8%
Age 75 - 84	1.6%	1.5%	1.8%
Age 85+	0.5%	0.4%	0.6%
Age 18+	64.5%	65.0%	66.0%
2015 Population by Age			
Total	22,638	176,016	408,612
Age 0 - 4	10.8%	11.2%	10.9%
Age 5 - 9	10.2%	10.1%	9.8%
Age 10 - 14	9.2%	9.0%	8.7%
Age 15 - 19	8.0%	7.7%	7.5%
Age 20 - 24	8.4%	8.4%	8.3%
Age 25 - 34	15.9%	16.3%	16.5%
Age 35 - 44	12.8%	13.5%	13.3%
Age 45 - 54	9.7%	10.0%	10.1%
Age 55 - 64	8.0%	7.6%	7.8%
Age 65 - 74	4.7%	4.3%	4.6%
Age 75 - 84	1.8%	1.6%	1.9%
Age 85+	0.5%	0.5%	0.6%
Age 18+	64.9%	65.1%	66.1%
2000 Population by Sex			
Males	50.9%	50.3%	50.5%
Females	49.1%	49.7%	49.5%
2010 Population by Sex			
Males	50.9%	50.2%	50.4%
Females	49.1%	49.8%	49.6%
2015 Population by Sex			
Males	51.0%	50.2%	50.4%
Females	49.0%	49.8%	49.6%

Source: ESRI forecasts for 2010 and 2015.; U.S. Bureau of the Census, 2000 Census of Population and Housing



Market Profile

NWC 79th Ave. & Thomas Rd.

Ring: 1, 3, 5 Miles	Ring: 1 mile radius	Ring: 3 miles radius	Ring: 5 miles radius
2010 Employed Population 16+ by Industry			
Total	7,306	61,494	137,405
Agriculture/Mining	0.3%	0.4%	0.7%
Construction	11.0%	11.4%	11.6%
Manufacturing	10.6%	9.8%	9.1%
Wholesale Trade	3.9%	4.3%	3.8%
Retail Trade	13.5%	12.6%	11.8%
Transportation/Utilities	5.4%	6.2%	5.8%
Information	2.6%	2.1%	1.9%
Finance/Insurance/Real Estate	8.5%	7.8%	8.0%
Services	39.7%	38.4%	40.8%
Public Administration	4.6%	6.8%	6.4%
2010 Employed Population 16+ by Occupation			
Total	7,304	61,495	137,409
White Collar	49.9%	50.9%	51.7%
Management/Business/Financial	6.5%	8.3%	9.9%
Professional	12.3%	12.6%	13.9%
Sales	12.7%	11.1%	10.9%
Administrative Support	18.4%	18.9%	17.0%
Services	19.6%	18.8%	19.5%
Blue Collar	30.5%	30.3%	28.8%
Farming/Forestry/Fishing	0.3%	0.3%	0.4%
Construction/Extraction	9.3%	9.8%	9.8%
Installation/Maintenance/Repair	5.4%	5.4%	5.0%
Production	7.4%	6.9%	6.5%
Transportation/Material Moving	8.1%	8.0%	7.2%
2000 Workers 16+ by Means of Transportation to Work			
Total	6,019	53,568	106,398
Drove Alone - Car, Truck, or Van	67.9%	69.0%	67.3%
Carpooled - Car, Truck, or Van	24.3%	23.6%	24.2%
Public Transportation	2.7%	2.7%	3.0%
Walked	2.4%	1.5%	1.8%
Other Means	1.4%	1.6%	2.1%
Worked at Home	1.3%	1.6%	1.6%
2000 Workers 16+ by Travel Time to Work			
Total	6,019	53,566	106,400
Did not Work at Home	98.7%	98.4%	98.4%
Less than 5 minutes	1.9%	1.1%	1.2%
5 to 9 minutes	5.9%	6.3%	5.7%
10 to 19 minutes	26.4%	24.9%	24.3%
20 to 24 minutes	16.7%	16.4%	15.7%
25 to 34 minutes	25.0%	27.5%	27.9%
35 to 44 minutes	7.2%	7.3%	7.6%
45 to 59 minutes	9.3%	8.6%	8.9%
60 to 89 minutes	4.5%	4.3%	4.8%
90 or more minutes	1.7%	2.0%	2.3%
Worked at Home	1.3%	1.6%	1.6%
Average Travel Time to Work (in min)	27.2	27.5	28.2
2000 Households by Vehicles Available			
Total	4,325	37,658	79,269
None	5.2%	6.8%	9.5%
1	34.5%	34.1%	36.4%
2	43.4%	40.7%	38.0%
3	12.9%	13.8%	11.8%
4	2.6%	3.6%	3.2%
5+	1.2%	1.0%	1.0%
Average Number of Vehicles Available	1.8	1.8	1.7

Source: ESRI forecasts for 2010; U.S. Bureau of the Census, 2000 Census of Population and Housing



Market Profile

NWC 79th Ave. & Thomas Rd.

Ring: 1, 3, 5 Miles

Ring: 1 mile radius

Ring: 3 miles radius

Ring: 5 miles radius

2000 Households by Type

	Ring: 1 mile radius	Ring: 3 miles radius	Ring: 5 miles radius
Total	4,375	37,631	79,265
Family Households	83.6%	82.5%	78.7%
Married-couple Family	57.7%	56.6%	53.7%
With Related Children	38.4%	37.9%	35.3%
Other Family (No Spouse)	25.9%	25.9%	25.0%
With Related Children	19.9%	19.9%	19.0%
Nonfamily Households	16.4%	17.5%	21.3%
Householder Living Alone	11.1%	12.3%	15.6%
Householder Not Living Alone	5.3%	5.2%	5.7%
Households with Related Children	58.3%	57.8%	54.3%
Households with Persons 65+	14.1%	12.4%	14.2%

2000 Households by Size

	Ring: 1 mile radius	Ring: 3 miles radius	Ring: 5 miles radius
Total	4,375	37,631	79,264
1 Person Household	11.1%	12.3%	15.6%
2 Person Household	22.9%	22.6%	23.1%
3 Person Household	17.3%	17.6%	17.2%
4 Person Household	17.7%	18.9%	17.7%
5 Person Household	15.2%	13.8%	12.7%
6 Person Household	7.7%	7.3%	6.7%
7+ Person Household	8.1%	7.5%	7.0%

2000 Households by Year Householder Moved In

	Ring: 1 mile radius	Ring: 3 miles radius	Ring: 5 miles radius
Total	4,328	37,658	79,268
Moved in 1999 to March 2000	22.4%	23.6%	27.9%
Moved in 1995 to 1998	31.0%	34.5%	33.6%
Moved in 1990 to 1994	14.5%	16.0%	15.2%
Moved in 1980 to 1989	13.7%	12.9%	11.3%
Moved in 1970 to 1979	12.2%	9.3%	7.6%
Moved in 1969 or Earlier	6.2%	3.7%	4.4%
Median Year Householder Moved In	1995	1996	1996

2000 Housing Units by Units in Structure

	Ring: 1 mile radius	Ring: 3 miles radius	Ring: 5 miles radius
Total	4,591	39,210	83,236
1, Detached	82.6%	75.9%	65.7%
1, Attached	2.6%	3.8%	3.3%
2	0.6%	0.7%	1.1%
3 or 4	2.6%	2.7%	3.7%
5 to 9	3.1%	3.2%	3.9%
10 to 19	1.9%	3.4%	3.4%
20+	6.3%	8.1%	12.6%
Mobile Home	0.2%	2.2%	6.1%
Other	0.0%	0.1%	0.2%

2000 Housing Units by Year Structure Built

	Ring: 1 mile radius	Ring: 3 miles radius	Ring: 5 miles radius
Total	4,676	39,168	83,234
1999 to March 2000	6.4%	3.6%	4.3%
1995 to 1998	5.3%	9.5%	9.5%
1990 to 1994	2.7%	6.2%	7.4%
1980 to 1989	19.0%	23.8%	23.2%
1970 to 1979	34.1%	35.1%	29.1%
1969 or Earlier	32.5%	21.8%	26.5%
Median Year Structure Built	1975	1978	1978